

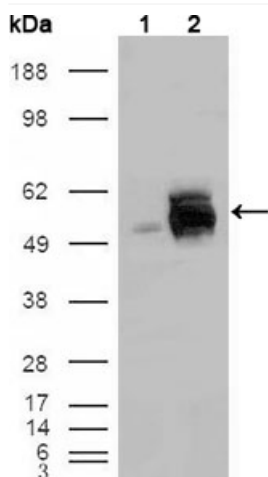


Rak Monoclonal Antibody

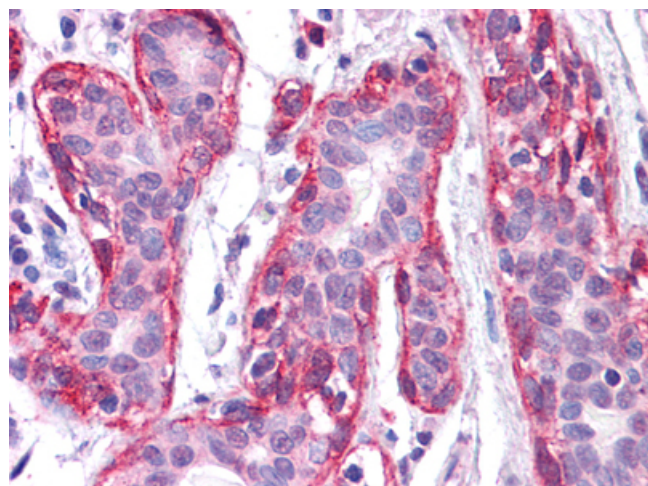
Catalog No	YP-Ab-14189
Isotype	IgG
Reactivity	Human
Applications	WB;IHC;IF;ELISA
Gene Name	FRK
Protein Name	Tyrosine-protein kinase FRK
Immunogen	Purified recombinant fragment of Rak (aa2-300) expressed in E. Coli.
Specificity	Rak Monoclonal Antibody detects endogenous levels of Rak protein.
Formulation	Ascitic fluid containing 0.03% sodium azide,0.5% BSA, 50%glycerol.
Source	Monoclonal, Mouse
Purification	Affinity purification
Dilution	WB: 1/500 - 1/2000. IHC: 1/200 - 1/1000. ELISA: 1/10000.. IF 1:50-200
Concentration	1 mg/ml
Purity	≥90%
Storage Stability	-20°C/1 year
Synonyms	FRK; PTK5; RAK; Tyrosine-protein kinase FRK; FYN-related kinase; Nuclear tyrosine protein kinase RAK; Protein-tyrosine kinase 5
Observed Band	
Cell Pathway	Cytoplasm . Nucleus . Predominantly found in the nucleus, with a small fraction found in the cell periphery.
Tissue Specificity	Predominantly expressed in epithelial derived cell lines and tissues, especially normal liver, kidney, breast and colon.
Function	catalytic activity:ATP + a [protein]-L-tyrosine = ADP + a [protein]-L-tyrosine phosphate.,similarity:Belongs to the protein kinase superfamily. Tyr protein kinase family. SRC subfamily.,similarity:Contains 1 protein kinase domain.,similarity:Contains 1 SH2 domain.,similarity:Contains 1 SH3 domain.,tissue specificity:Restricted to cells lines derived from tissues of lymphoid, brain, breast, colon and bladder origin.,
Background	The protein encoded by this gene belongs to the TYR family of protein kinases. This tyrosine kinase is a nuclear protein and may function during G1 and S phase of the cell cycle and suppress growth. [provided by RefSeq, Jul 2008],
matters needing attention	Avoid repeated freezing and thawing!

**Usage suggestions**

This product can be used in immunological reaction related experiments. For more information, please consult technical personnel.

Products Images

Western Blot analysis using Rak Monoclonal Antibody against HEK293T cells transfected with the pCMV6-ENTRY control (1) and pCMV6-ENTRY Rak cDNA (2).



Immunohistochemistry analysis of paraffin-embedded human Breast tissues with AEC staining using Rak Monoclonal Antibody.